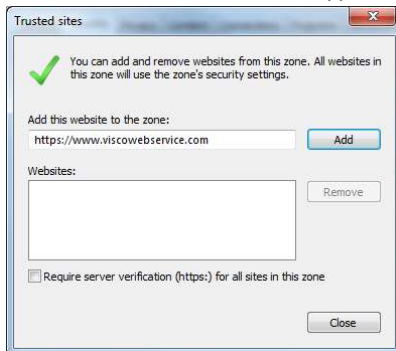


## Workstation Setup for VISCO - 2017

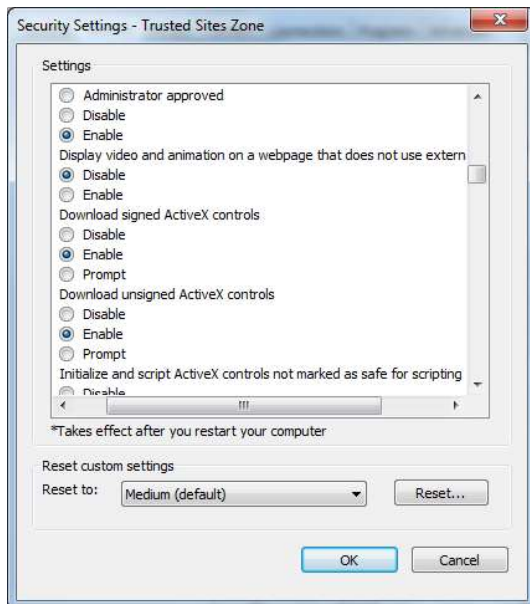
1. Go to Computer/Local Disk (C:) - Add a new Folder **VISTemplates**.
2. We currently recommend using **CHROME** as your browser for VISCO. To use Chrome, key in your web service address and you will need to ALLOW POPUP BLOCKERS by going to the far right of the tool bar, right click and choose **“Always Allow POPUPs for this site.”** Then you can refresh the page. If you are still using Internet Explorer – Internet Options/Security, Click on Trusted Sites, then Sites



3. For WebService installs, type in <https://www.viscowservice.com>, then click on Add, the Close.

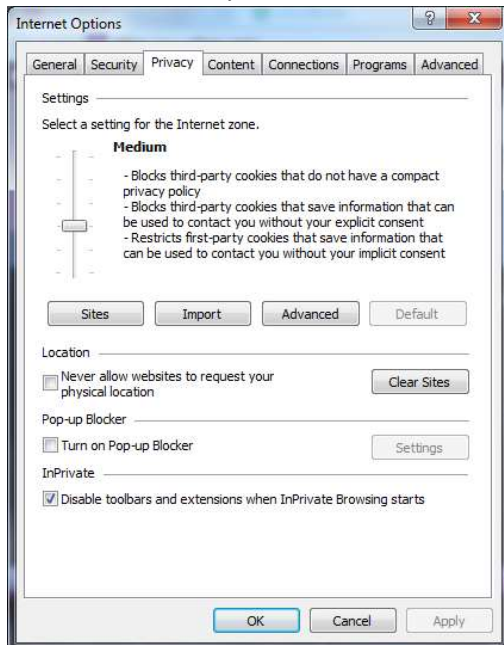


4. For Network installs, type in the network address, then click on Add, then Close.
5. On the same tab, at the bottom, Choose **Custom Level**. Click on **Enable** for the following choices:
  - **Allow Scriptlets**
  - **Download signed ActiveX controls**
  - **Download unsigned ActiveX controls**
  - **Initialize and script ActiveX controls not marked as safe for scripting**



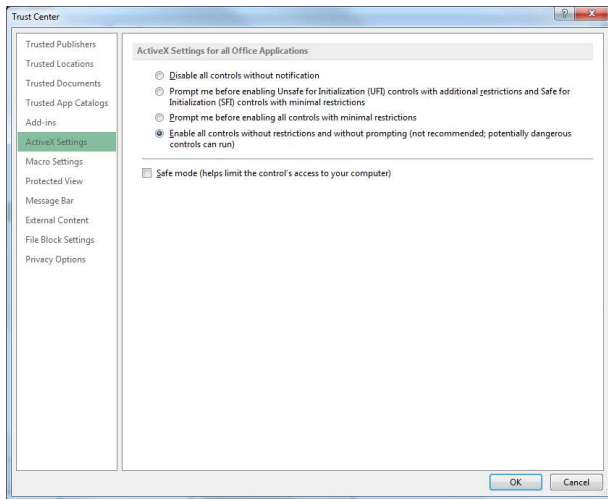
Then, choose OK. You may be prompted, “Are you sure you want to make the following changes?”, click OK.

6. Under the Privacy tab, uncheck the **Turn on Pop-up Blocker**. Then click OK.

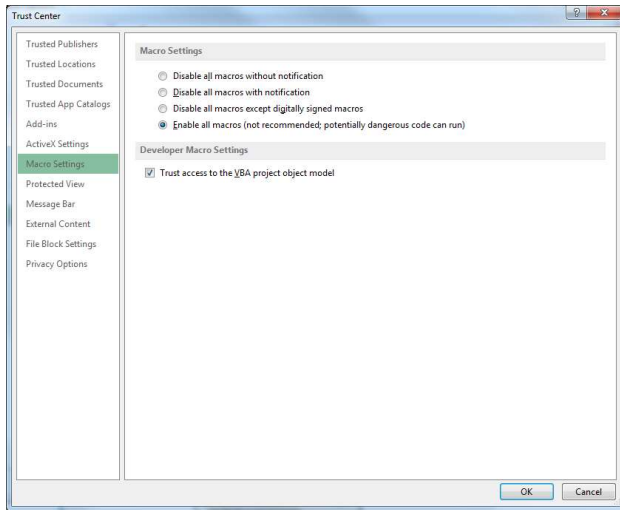


7. **Open MS Excel**, Choose Options. Then choose Trust Center, **Trust Center Settings**.

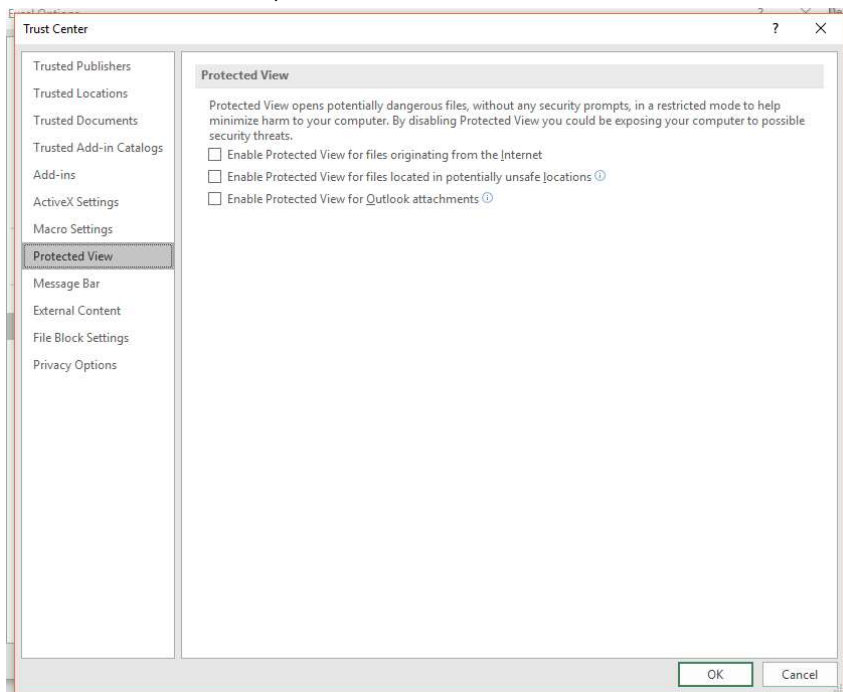
On the left hand side, choose ActiveX Settings, choose Enable all Controls without restrictions and without prompting. Uncheck Safe Mode.



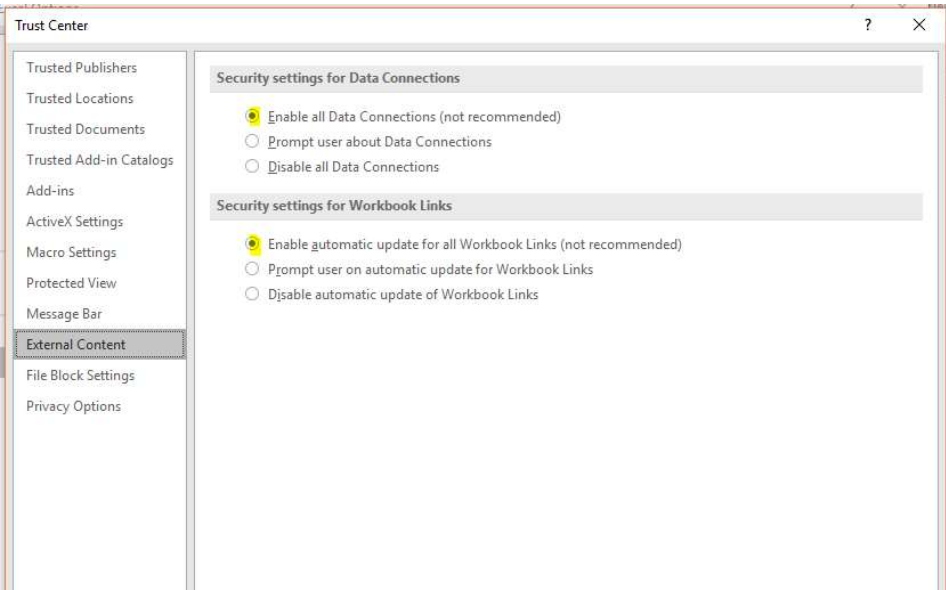
8. On the left hand side, choose Macro Settings, Enable all macros. Check Trust access to the VBA project.



9. On the left hand side, choose Protected View and be sure all checkboxes are UNCHECKED.



10. On the left hand side, choose External Content. Then choose Enable all Data Connections and Enable automatic update for all Workbook Links.

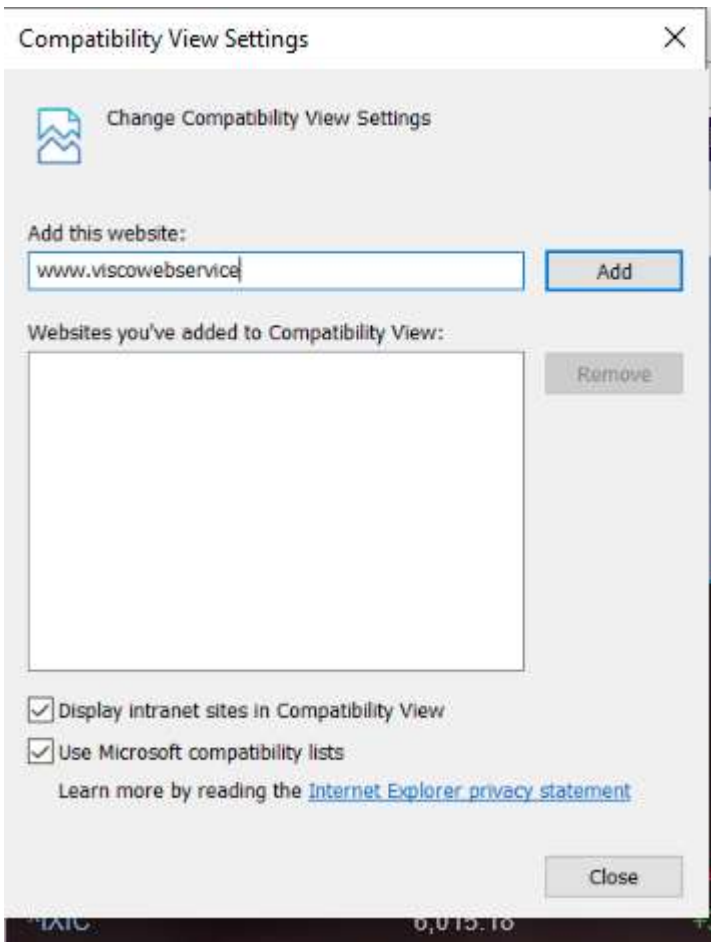


11.

12. Then click Ok, Ok and close MS Excel.

13. You may want to add your VISCO install to your CHROME favorites.

14. This is very seldom used any more, but you may need to change your Compatibility View Settings for documents to generate. In Internet Explorer, you will go to the little gear in the upper right hand corner of your toolbar, choose Compatibility View Settings. (this may also appear on the toolbar under "Tools") When the window comes up, you will enter your web address for hosted applications or your server address for network installs. Choose Add and then close the window.



## Compatibility View Settings



Change Compatibility View Settings

Add this website:

Add

Websites you've added to Compatibility View:

www.viscowservice

Remove

Display intranet sites in Compatibility View

Use Microsoft compatibility lists

Learn more by reading the [Internet Explorer privacy statement](#)

Close